






High-Flying Zigbee Module Product Y2015

	HF-Z100	HF-Z100A	HF-Z100C(Most Recommended)
Module Overview			
Differences			
Antenna Type	External Through Hole Pad	External Pin Pad	On-board PCB Antenna
Size	15.6mm x 12.2mm x 2mm	15.6mm x 12.2mm x 2mm	22.2mm x 15.5mm x 3.0mm
Pin Defination	GND for PIN 1	2.4G Antenna output for PIN1	GND for PIN 1
Features			
Certification	FCC/CE/RoHS		
Wireless Standard	802.15.4		
Radio Data Rate	250Kbps@2.4GHz		
Frequency Range	2.4~2.4835GHz		
Transmit Power	9 ±1.5 dBm		
ReceiverSensitivity	≤-101dBm		
Data Interface	2xUART, 5xPWM, 3xADC,1xI2C (15xGPIO in All)		
Operating Voltage	2.0~3.6V		
Operating Current	<60mA		
Deep Sleep Current	<10uA		
Communication Distance	Indoor 30m, Outdoor 100m		
Operating Temp.	-40℃ - 125℃		
StorageTemp.	-45℃ - 125℃		

Note:

- 1、 HF-Z100 and HF-Z100A do not contain shield.
- 2、 HF-Z100C is with shield by default.

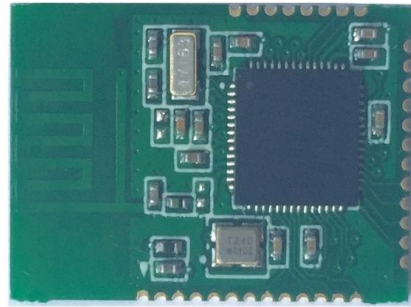
High-Flying Zigbee Gateway Module Product Y2015

	HF-ZG01	HF-ZG02
Module Overview		
Production	2015/Q3(New)	2014/Q4
Differences		
Wifi Module Inside	HF-A21-SMT	HF-LPB100
Ethernet	✓	✗
Key	Button	Touch Key
Features		
Zigbee Module Inside	HF-Z100A	
Size	56 x 56 x 34 mm	
Wireless Standard	802.11bgn and 802.15.4	
Input Voltage	100~240VAC~50/60Hz	
Operating Temp.	-40℃ - 85℃	
StorageTemp.	-45℃ - 125℃	

High-Flying BLE Module Product Y2015

HF-BL100-CU

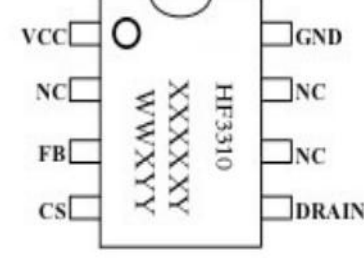
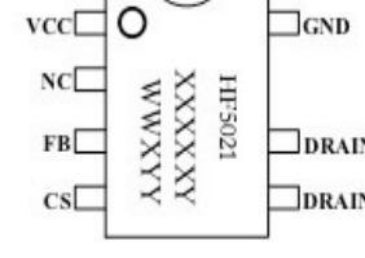

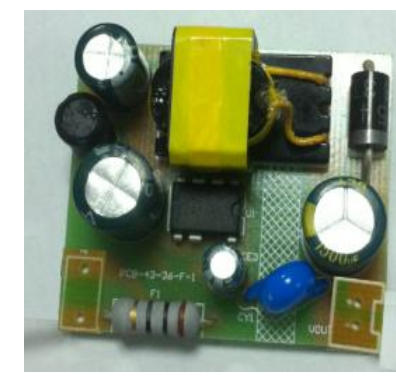
Module Overview



Features

Antenna Type	On-board PCB Antenna
Size	22.2mm x 15.4mm x 2.0mm
Certification	FCC/CE/BQB
Wireless Standard	802.15.1 (BT 4.0)
Frequency Range	2.402GHz~2.480GHz
Transmit Power	+3 dBm
ReceiverSensitivity	-89 dBm@(BT4.0)
Data Interface	UART, GPIO
Operating Voltage	1.9~3.6V
Operating Current	20mA
Deep Sleep Current	1.3uA
Operating Temp.	-40°C - 85°C
StorageTemp.	-45°C - 125°C

High-Flying AC-DC Module Product Y2015

	HF3310	HF5021	HF-PM3310(Use HF3310 Chip)	HF-PM5021(Use HF5021 Chip)
Module Overview				
Differences				
Pout1	6W	18W		
Rds_on	14Ω	2.4Ω		
Input current			90mA	280mA
Input power			5.1W	14.7W
Output voltage range			3.3V (Typical)	5.0V (Typical)
Output current range			1A (Max)	2.1A (Max)
Output power			3.5W (Max)	11W (Max)
Efficiency			68% (Input:230Vac,full load)	75% (Input:230Vac,full load)
Features				
VCC Input	10~25V			
Fosc_max	65KHz			
Vcc_clamp	26.5V			
Vcc_ovp	28V			
Vcc_on	15.3V			
Vcc_uvlo	7.6V			
Ist	14uA			
Iop	240uA			
Vcs_th	600mA			
Tleeb	500ns			
Vfb_ea_ref	3V			
Vfb_ovp	4V			
Vfb_dem	0.1V			
Vfb_short	0.58V			
Fosc_short	20KHz			
Tsample_big	5.8uS			
Toff_max	1mS			
Tdem/Tsw	0.5			
BVdss	650V			
Idss	1uA			
Tsd	150℃			
Tsd_hys	30℃			
AC input voltage range			88~264Vac	
AC input voltage rating			100~240Vac	
AC input frequency range			47~63Hz	
Starting voltage			88Vac (Full load)	
Line regulation			2% (AC input voltage rating)	
Load regulation			5% (10%-100%load)	
Ripple noise			500mV (Input:230Vac,full load)	
Over current point			105% (Input:230Vac)	
Turn on delay time			500ms (Input:230Vac,full load)	
Hold up time			20ms (Input:230Vac,full load)	
Insulation resistance			100MΩ	
Dielectric strength			3000Vac	
Operating Temp.			0~60℃	
StorageTemp.			-20℃- 85℃	
Operating humidity			0~85%RH	
Storage humidity			25~85%RH	